



# Intel<sup>®</sup> StrongARM<sup>®</sup> SA-1110 Development Board

## Cable Drawings

---

*Advance Information*

*January 2000*

*Phase 4*

---

**Notice:** This document contains information on products in the sampling and initial production phases of development. Revised information will be published when this product is available.

---

Order Number: 278330-001



Information in this document is provided in connection with Intel products. No license, express or implied, by estoppel or otherwise, to any intellectual property rights is granted by this document. Except as provided in Intel's Terms and Conditions of Sale for such products, Intel assumes no liability whatsoever, and Intel disclaims any express or implied warranty, relating to sale and/or use of Intel products including liability or warranties relating to fitness for a particular purpose, merchantability, or infringement of any patent, copyright or other intellectual property right. Intel products are not intended for use in medical, life saving, or life sustaining applications.

Intel may make changes to specifications and product descriptions at any time, without notice.

The SA-1111 Development Module may contain design defects or errors known as errata which may cause the product to deviate from published specifications. Current characterized errata are available on request.

Contact your local Intel sales office or your distributor to obtain the latest specifications and before placing your product order.

Copies of documents which have an ordering number and are referenced in this document, or other Intel literature may be obtained by calling 1-800-548-4725 or by visiting Intel's website at <http://www.intel.com>.

Copyright © Intel Corporation, January 2000

\*Other brands and names are the property of their respective owners.

ARM and StrongARM are registered trademarks of ARM, Ltd.

## 1.0 Intel® StrongARM® SA-1110 Development Board Cables

This document contains illustrations of the cables used for the Intel® StrongARM® SA-1110 Development Board (SA-1110 Development Board).

*Note:* This document and module are for the Phase 4 hardware build of this product. For the latest information and updates, see the hardware release notes that are provided in hardcopy format, and the software readme.txt files that are provided in the software kits.

### 1.1 Cables

The SA-1110 Development Board uses the base station cable for programming the CPLD and telephony, and uses the video cable for composite video from the SA-1110 Development Board:

Figure 1. Base Station Cable for Programming CPLD and Telephony

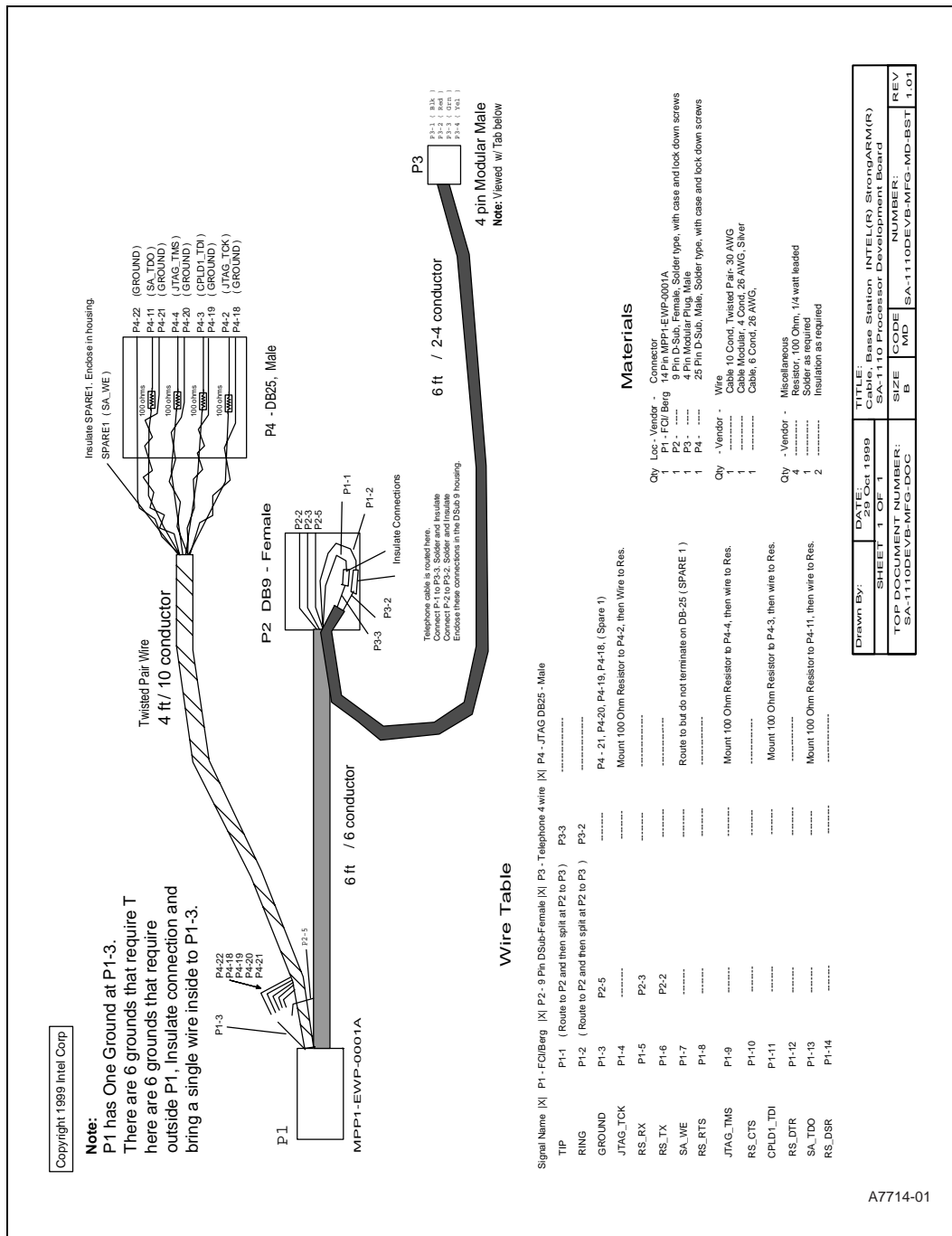
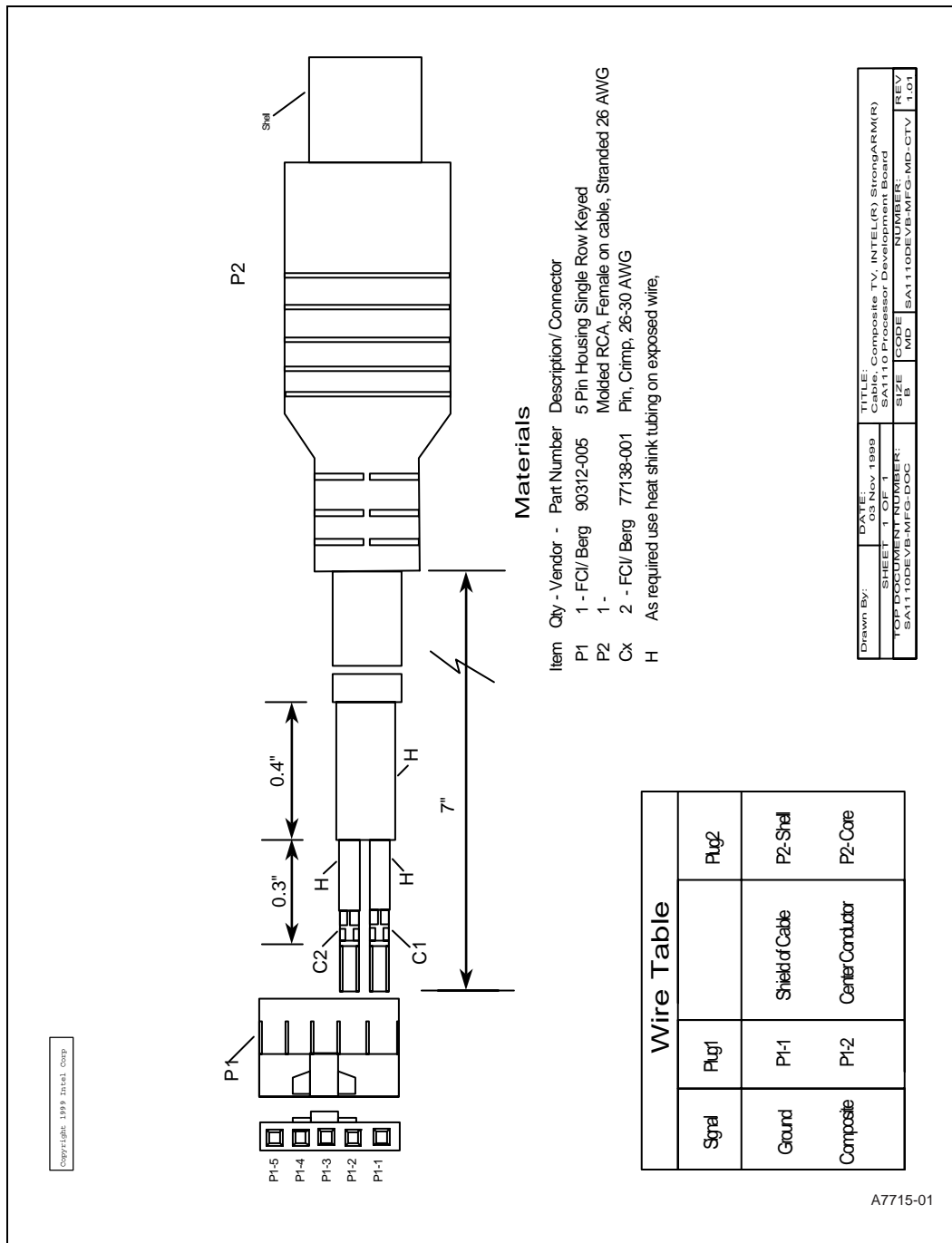


Figure 2. SA-1110 Development Board Composite TV Cable





## ***Support, Products, and Documentation***

---

If you need general information or support, call 1-800-628-8686 or visit Intel's website at:

<http://www.intel.com>

Copies of documents that have an ordering number and are referenced in this document, a product catalog, or other Intel literature may be obtained by calling **1-800-548-4725** or by visiting Intel's website for developers at:

<http://developer.intel.com>

